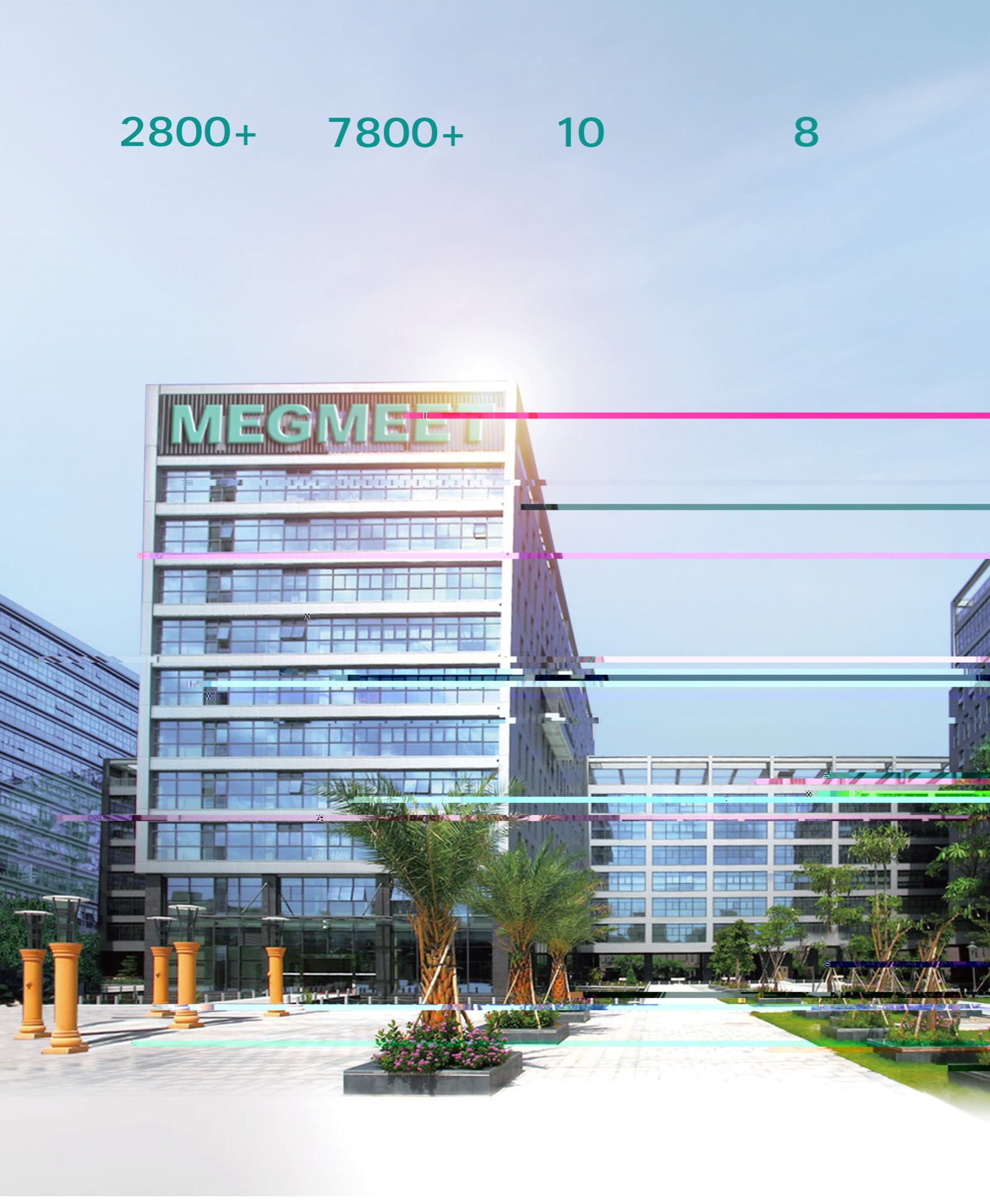


2800+

7800+

10

8



trical automation field, highlighting in power electronics and automatic control tech

MEGMEET is committed to helping people achieve a more efficient use of elec
efficiency and creating a better life for human beings. Our company aspires to
become a global first-class product and solution provider in the field of electrical

CONTENT

-----	P01
-----	P07
-----	P08
-----	P09
-----	P16

PLC

MU200 Series

4 Major Product Features



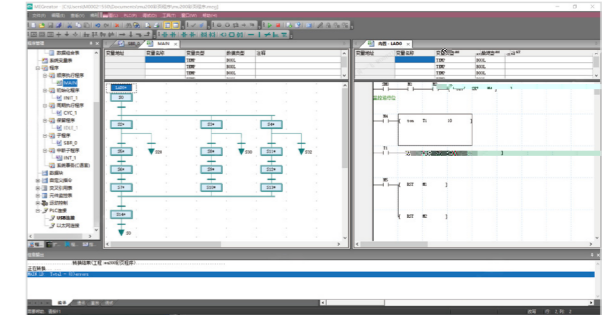
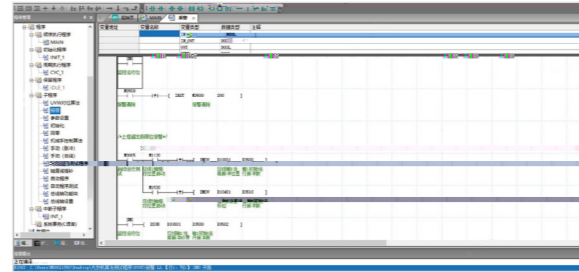
01 Excellent performance Widespread application



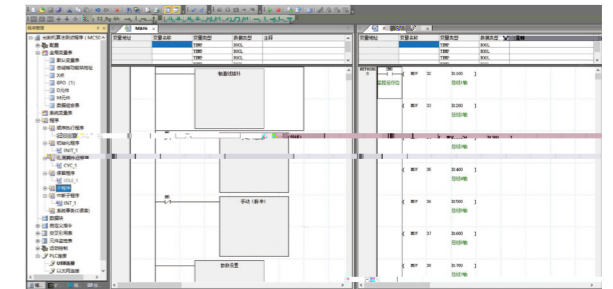
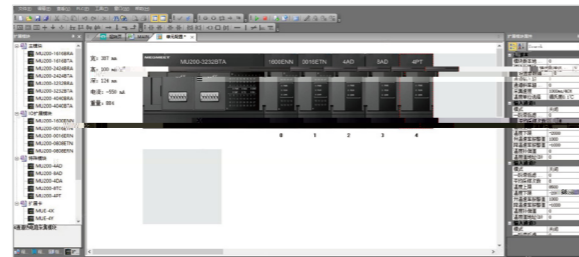
04 Simplified programming Upgrading of function

Support online modification and incremental compilation to improve compilation efficiency;

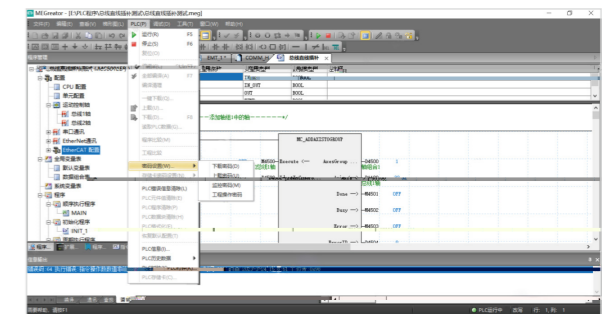
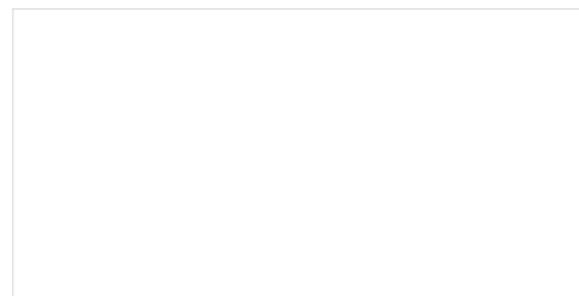
User-program can pinpoint errors for finding and



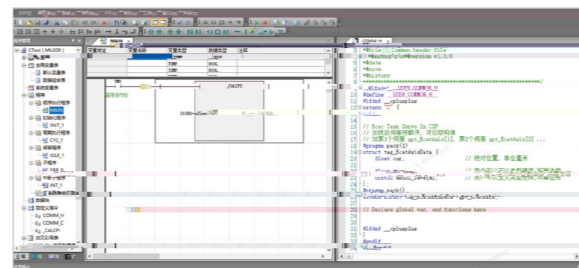
The more convenient and intuitive configuration, the more flexible operation.



be configured through table without invoking complex



user-defined function instruction.



MU200-1616

MU200-2424

MU200-3232

MU200-4040



MU200



MU200BTA



MU200-4040

X0~X1777 Y0~Y1777

30nS

64k

0~8

1~8

0~8

0~256

0~4096

8192

1536

2048

16000

16000

256

256

256

1536



MUE-RS485

MUE-RS232

1200, 2400, 4800, 9600

MU200-0808ERN MU200-0808ETN MU200-1600ENN MU200-0016ERN MU200-0016ETN

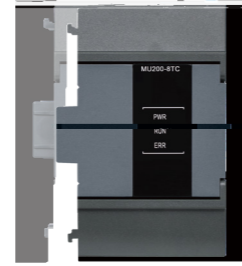


24VDC
 4.3K
 1KHZ
 0.5ms
 1~128ms,
 AC2

	MU200-4AD	MU200-8AD	MU200-4DA
	14bit	16bit	/
	8ms/4	16ms/8	2ms/
	±1%		
	/		±1%
	400KΩ		/
	250Ω		
	/		1KΩ ()
			500Ω ()
	30mA	45mA	20mA

MU200-4PT

MU200-8TC



4

8

PT100、CU50、CU100、0~300R

0.1°C

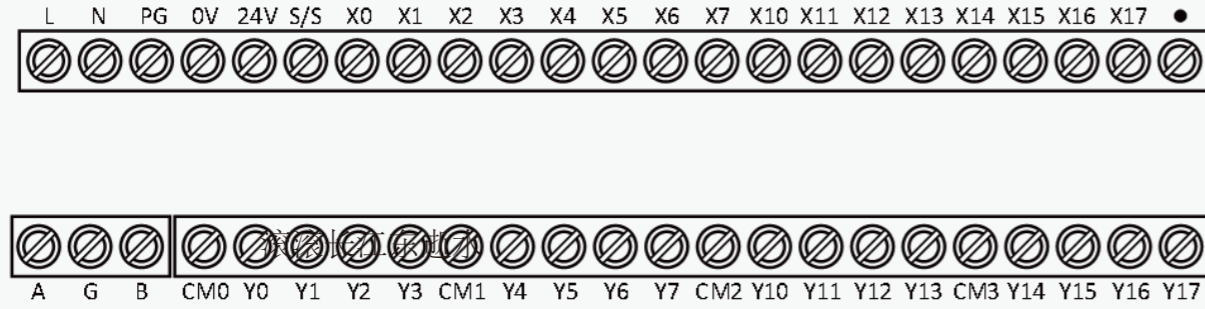
0.1°C

/

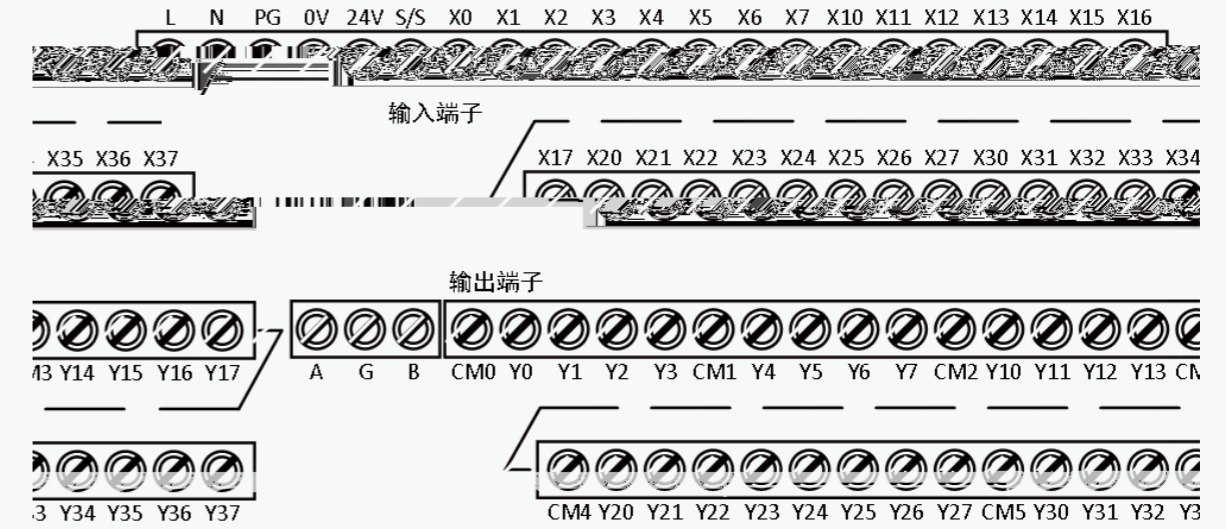
/

Terminal Diagram of Basic Module

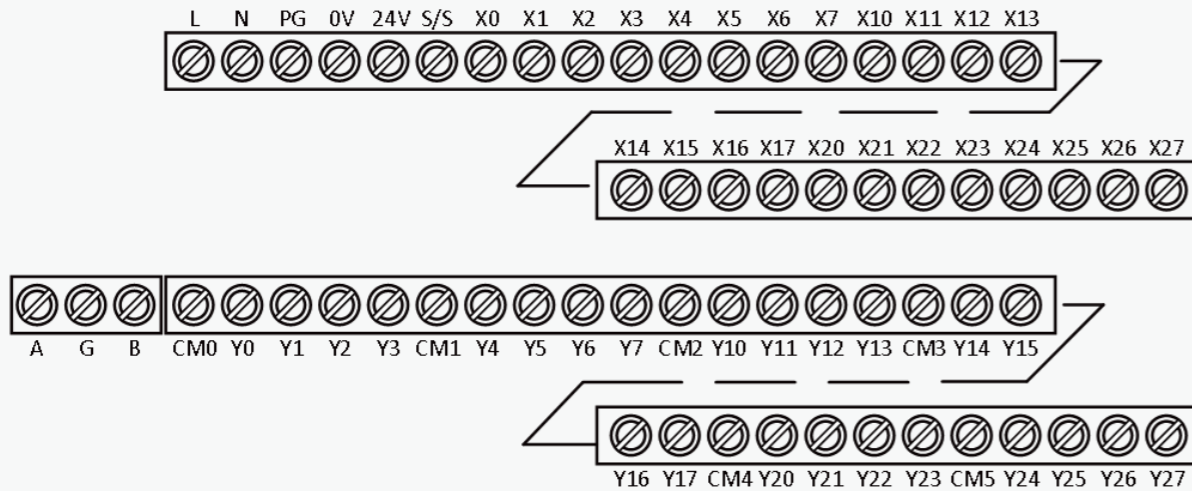
MU200-1616



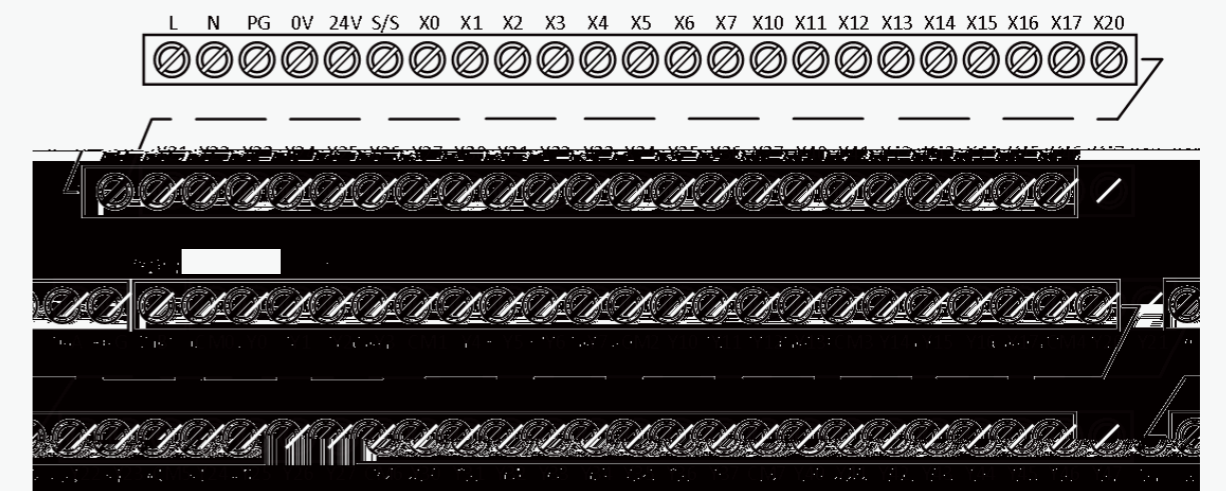
MU200-3232



MU200-2424



MU200-4040



Terminal Diagram of Expansion Module

MU200-0016ETN/ERN

